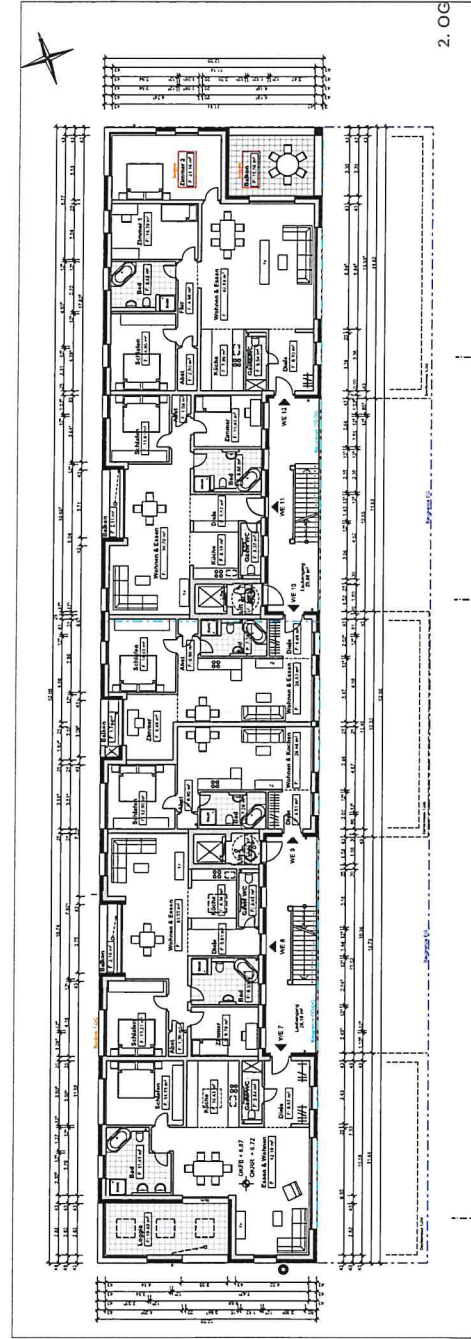
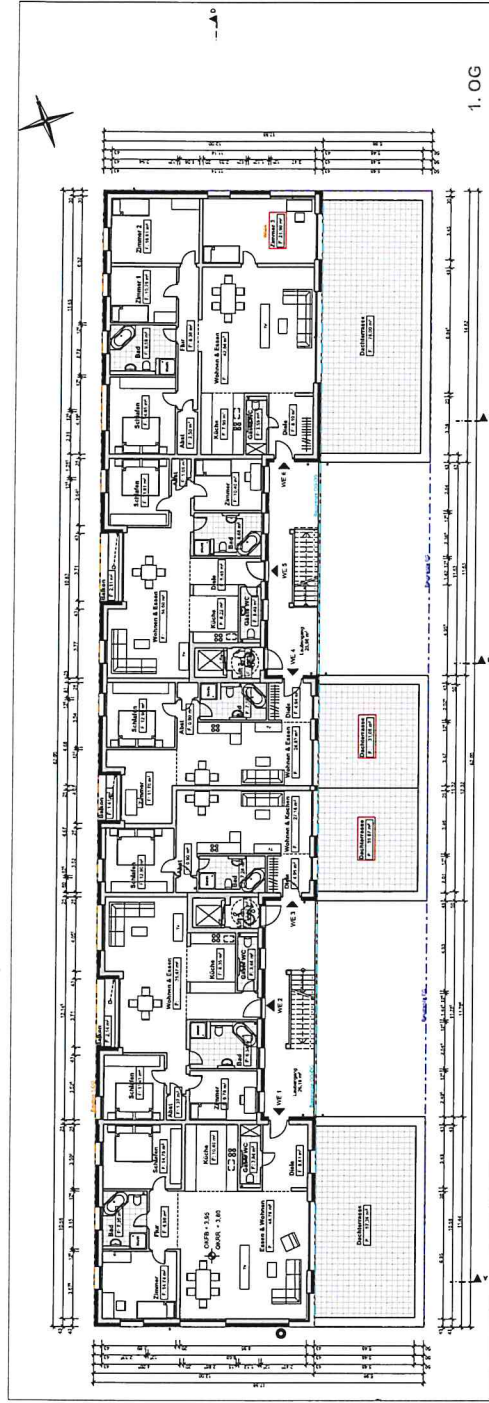


Markgräfer Ensemble / Baufeld E



20.12.2023 - Nachtrag zum

BAUANTRAG



1. & 2. OBERGESCHOSS

1. BA 2. BA 1.0G 2.0G

LEGENDE:

ADDRESS
-- 86 -- 87 -- 88 -- 9

10

1

1

10

AUFTRAGGEBER:

1

17

10

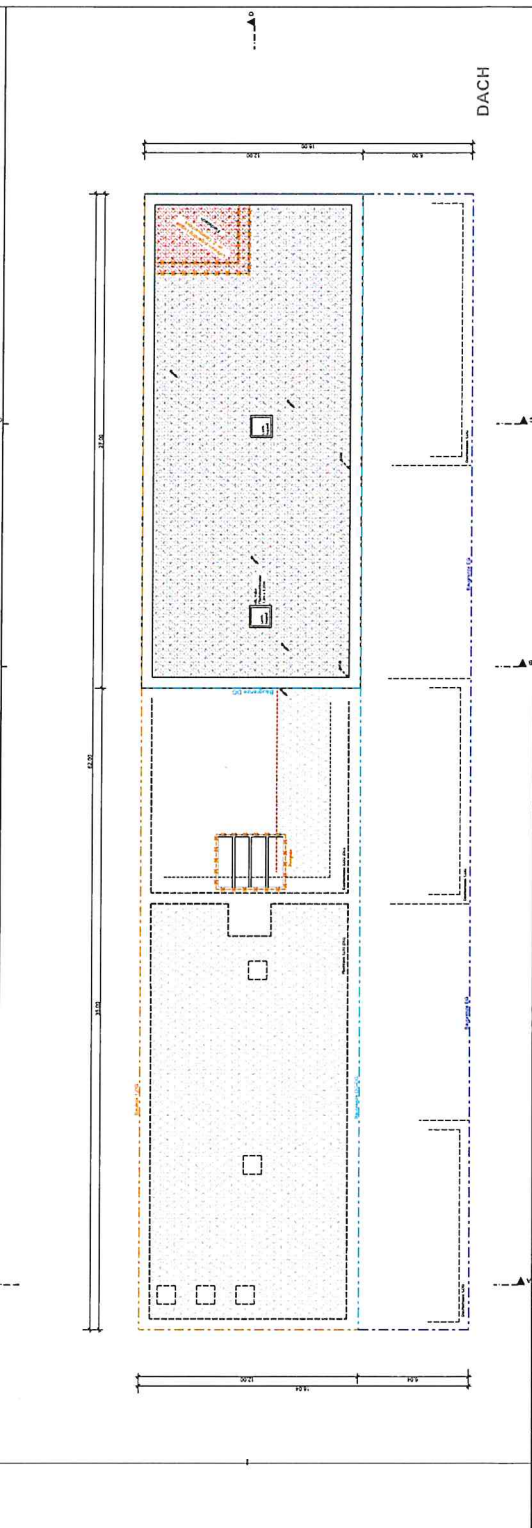
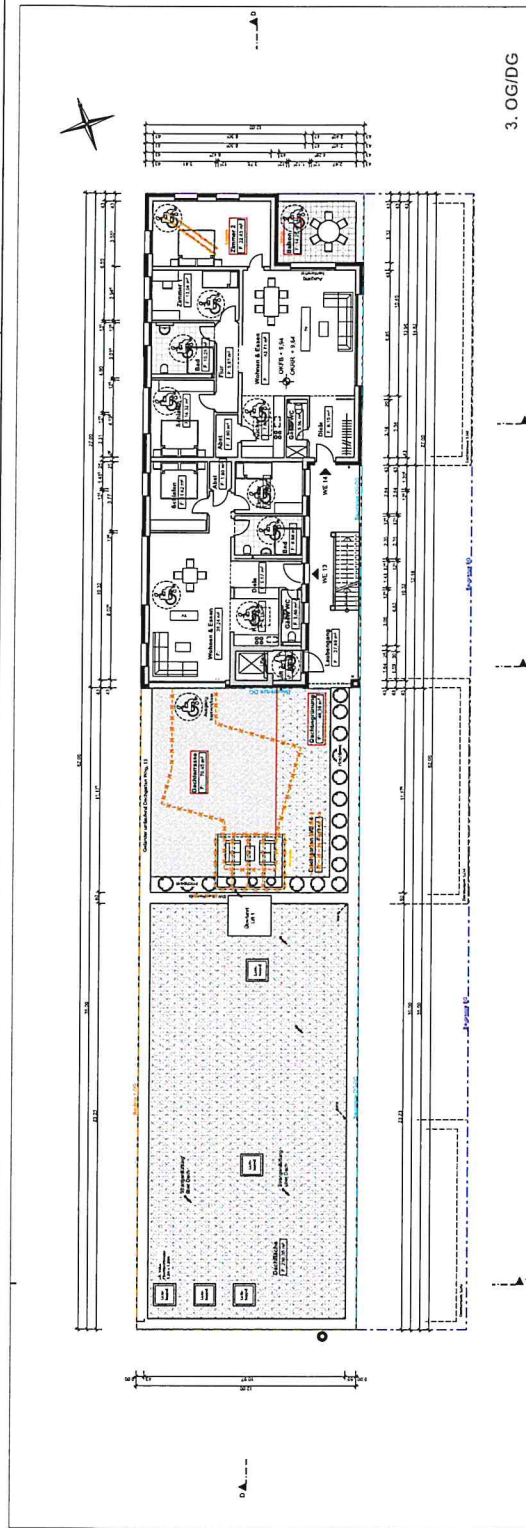
1

Markgräfl

Value	
1.10	

100% of the total value of the property.

1111



20.12.2023 - Nachtrag zum

BAUANTRAG



3.OBERGESCHOSS + DACH

SA. J. BUS. ECON. RESEARCH

LEGEND:

NEU
BRUCH

100

1

AUFWACHSEN:

UNTRIGGERED:

1000

5

Markaräfflor

1514 KYRIAKI ET AL.

Panel	Model
Panel A	Model 1
Panel B	Model 2
Panel C	Model 3
Panel D	Model 4
Panel E	Model 5
Panel F	Model 6
Panel G	Model 7
Panel H	Model 8
Panel I	Model 9
Panel J	Model 10
Panel K	Model 11
Panel L	Model 12
Panel M	Model 13
Panel N	Model 14
Panel O	Model 15
Panel P	Model 16
Panel Q	Model 17
Panel R	Model 18
Panel S	Model 19
Panel T	Model 20
Panel U	Model 21
Panel V	Model 22
Panel W	Model 23
Panel X	Model 24
Panel Y	Model 25
Panel Z	Model 26
Panel AA	Model 27
Panel AB	Model 28
Panel AC	Model 29
Panel AD	Model 30
Panel AE	Model 31
Panel AF	Model 32
Panel AG	Model 33
Panel AH	Model 34
Panel AI	Model 35
Panel AJ	Model 36
Panel AK	Model 37
Panel AL	Model 38
Panel AM	Model 39
Panel AN	Model 40
Panel AO	Model 41
Panel AP	Model 42
Panel AQ	Model 43
Panel AR	Model 44
Panel AS	Model 45
Panel AT	Model 46
Panel AU	Model 47
Panel AV	Model 48
Panel AW	Model 49
Panel AX	Model 50
Panel AY	Model 51
Panel AZ	Model 52
Panel BA	Model 53
Panel BB	Model 54
Panel BC	Model 55
Panel BD	Model 56
Panel BE	Model 57
Panel BF	Model 58
Panel BG	Model 59
Panel BH	Model 60
Panel BI	Model 61
Panel BJ	Model 62
Panel BK	Model 63
Panel BL	Model 64
Panel BM	Model 65
Panel BN	Model 66
Panel BO	Model 67
Panel BP	Model 68
Panel BQ	Model 69
Panel BR	Model 70
Panel BS	Model 71
Panel BT	Model 72
Panel BU	Model 73
Panel BV	Model 74
Panel BW	Model 75
Panel BX	Model 76
Panel BY	Model 77
Panel BZ	Model 78
Panel CA	Model 79
Panel CB	Model 80
Panel CC	Model 81
Panel CD	Model 82
Panel CE	Model 83
Panel CF	Model 84
Panel CG	Model 85
Panel CH	Model 86
Panel CI	Model 87
Panel CJ	Model 88
Panel CK	Model 89
Panel CL	Model 90
Panel CM	Model 91
Panel CN	Model 92
Panel CO	Model 93
Panel CP	Model 94
Panel CQ	Model 95
Panel CR	Model 96
Panel CS	Model 97
Panel CT	Model 98
Panel CU	Model 99
Panel CV	Model 100
Panel CW	Model 101
Panel CX	Model 102
Panel CY	Model 103
Panel CZ	Model 104
Panel DA	Model 105
Panel DB	Model 106
Panel DC	Model 107
Panel DD	Model 108
Panel DE	Model 109
Panel DF	Model 110
Panel DG	Model 111
Panel DH	Model 112
Panel DI	Model 113
Panel DJ	Model 114
Panel DK	Model 115
Panel DL	Model 116
Panel DM	Model 117
Panel DN	Model 118
Panel DO	Model 119
Panel DP	Model 120
Panel DQ	Model 121
Panel DR	Model 122
Panel DS	Model 123
Panel DT	Model 124
Panel DU	Model 125
Panel DV	Model 126
Panel DW	Model 127
Panel DX	Model 128
Panel DY	Model 129
Panel DZ	Model 130
Panel EA	Model 131
Panel EB	Model 132
Panel EC	Model 133
Panel ED	Model 134
Panel EE	Model 135
Panel EF	Model 136
Panel EG	Model 137
Panel EH	Model 138
Panel EI	Model 139
Panel EJ	Model 140
Panel EK	Model 141
Panel EL	Model 142
Panel EM	Model 143
Panel EN	Model 144
Panel EO	Model 145
Panel EP	Model 146
Panel EQ	Model 147
Panel ER	Model 148
Panel ES	Model 149
Panel ET	Model 150
Panel EU	Model 151
Panel EV	Model 152
Panel EW	Model 153
Panel EX	Model 154
Panel EY	Model 155
Panel EZ	Model 156
Panel FA	Model 157
Panel FB	Model 158
Panel FC	Model 159
Panel FD	Model 160

© 2000 Blackwell Science Ltd, *Journal of Internal Medicine* 247: 105–112
